

Assembly Instructions Garden Cart



4x M8 bolts with x-head
4x M8 bolts with hex head
4x M6 bolts with x-head



2x split pins



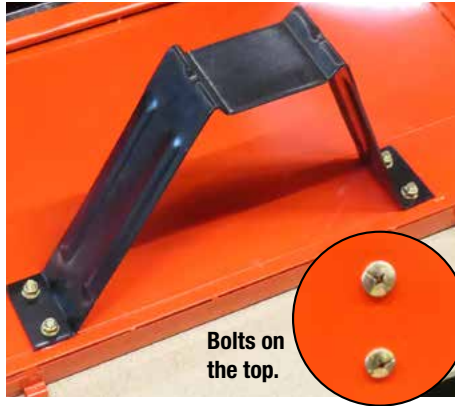
2x washers



6x spring locking pins

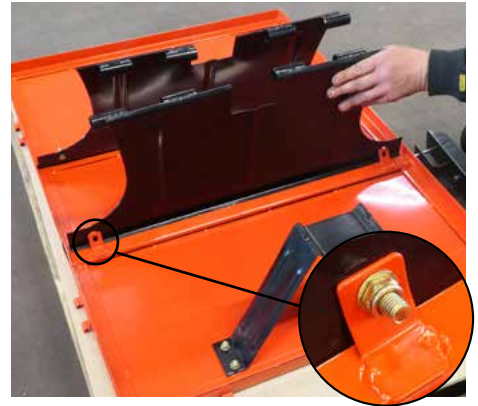


2x spring locking pins with chain



Bolts on the top.

Attach the drawbar bracket to the bottom of the cart with 4x M8 with x-head.



Insert the wheel plates and fasten them with 2x M8 bolts with hex head in each plate. Use 2x 13mm spanners when you screw them in.



Attach the axle and the drawbar as shown in the picture.



Put the wheels on the axle, add the washers and fasten with the split pins (one on each side).



The drawbar is locked in the drawbar bracket.



Attach the frontboard and the sides and lock them with spring locking pins.



Attach the rails for the tailboard with 4x M6 bolts with x-head.



Push the tailboard into the slits in the rails.



Fasten the tailboard with the spring locking pins with chain.



Tilt the cart by pulling the spring loaded locking mechanism.